

Columbus Portfolio Range

Fund Fact Sheet

CRF Balanced Plus

November 2020

Launch date
December 2012

Fund size
R 169.9 million

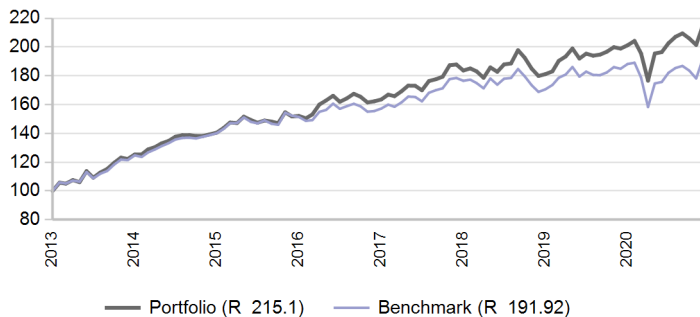
Fund description

Combined - Multi asset class - Specialist

Portfolio description

This portfolio is managed within what Alexander Forbes Investments regards to be aggressive investment parameters. Within each asset class, the investment managers are given specific mandates aimed at growth in capital value. In constructing the local component of this portfolio, Alexander Forbes Investments allocates the assets primarily to equities. The global component has a similar investment profile, with allocation to global equities, bonds, cash and alternative investments.

Value of R 100 invested since inception



Manager weightings

Manager	Weight
Performer	86.3%
Performer Local Equity BB	9.1%
Global ACWI Index	4.6%
AF Investments Global DM Index Equity AM	0.0%
AF Investments Global EM Index Equity AM	0.0%
Total	100.0%

Risk stats over 3 Years

	Portfolio	Benchmark
Annualised standard deviation	12.0%	12.6%
Sharpe ratio	-0.1	-0.3
Maximum drawdown	13.5%	16.3%
Positive months	61.1%	58.3%

Benchmark allocation

Local asset class	Benchmark	Allocation
Equity	FTSE/JSE Capped Shareholder Weighted All Share Index	15.0%
Combined asset class	Benchmark	Allocation
Balanced	AF Investable Global LMW Median	85.0%
Total		100.0%

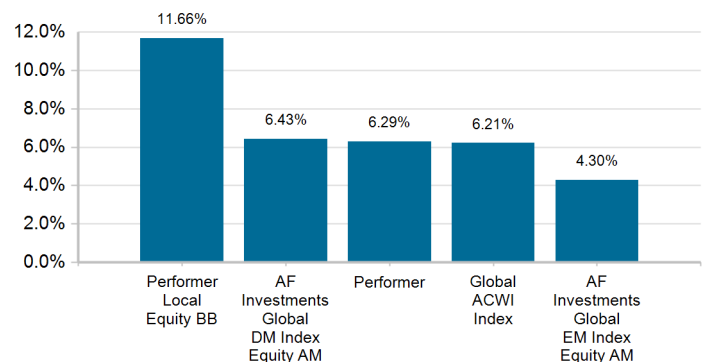
Market summary

	1 Month	3 Months	1 Year	3 Years
FTSE/JSE All Share	10.51%	3.62%	6.04%	1.59%
FTSE/JSE SWIX	8.31%	4.00%	2.34%	-1.64%
FTSE/JSE Capped SWIX ALSI	10.38%	4.57%	-1.69%	-2.92%
FTSE/JSE SA Property	17.47%	4.29%	-43.57%	-22.95%
All Bond Index	3.25%	4.12%	8.04%	10.01%
STeFI Composite index	0.31%	1.00%	5.67%	6.74%
MSCI AC World	6.56%	-3.26%	21.21%	13.77%
FTSE WGBI	-3.64%	-7.72%	14.81%	9.13%

Portfolio returns

	Portfolio	Benchmark
1 Month	6.76%	7.71%
3 Months	2.68%	2.71%
YTD	6.89%	1.98%
1 Year	8.13%	3.79%
3 Years	4.61%	2.45%
5 Years	7.23%	4.73%
Since Inception	10.05%	8.49%

Underlying returns (1 month to November 2020)



Effective asset allocation exposure

Local	68.0%
Equity Excluding Property	42.8%
Consumer Services	11.2%
Basic Materials	10.1%
Financials	9.5%
Consumer Goods	5.3%
Industrials	1.9%
Healthcare	1.6%
Telecommunications	1.4%
Technology	1.3%
Other Securities	0.5%
Oil & Gas	0.0%
Property	1.7%
Bonds	14.6%
< 12 Months	0.4%
1 - 3 Years	0.6%
3 - 7 Years	4.9%
7 - 12 Years	2.8%
12+ Years	5.9%
Cash	2.2%
Commodities	1.3%
Alternatives	5.4%
Global	30.9%
Equity Excluding Property	26.2%
Property	1.2%
Bonds	1.7%
Cash	1.8%
Balanced	0.0%
Africa	1.1%
Equity Excluding Property	0.8%
Property	0.0%
Bonds	0.0%
Cash	0.0%
Alternatives	0.2%

Top 10 equity holdings

Holding	%
NASPERS	5.8%
BRITISH AMERICAN TOBACCO PLC	2.3%
STANDARD BANK GROUP	2.2%
FIRSTRAND LIMITED	2.1%
ANGLO AMERICAN	1.8%
BHP GROUP PLC	1.8%
IMPALA PLATINUM HLDS	1.3%
PROSUS	1.2%
MTN GROUP	1.2%
ANHEUSER-BUSCH INBEV	1.1%
% of total portfolio	20.8%

Top 10 fixed interest issuers

Issuer	%
SOUTH AFRICA (REPUBLIC OF)	11.2%
ESKOM HOLDINGS SOC LTD	0.6%
FIRSTRAND BANK LIMITED	0.6%
MERCER GLOBAL INVESTMENTS MANAGEMENT LTD	0.4%
STANDARD BANK GROUP LTD	0.4%
ISHARES PLC	0.3%
YIELDX	0.2%
NEDBANK GROUP LTD	0.2%
INVESTEC BANK LIMITED	0.2%
ABSA GROUP LIMITED	0.2%
% of total portfolio	14.2%

Total expense ratio and Transaction cost breakdown

Period (Annualised, rolling one-year period): 01 Nov 2019 to 31 Oct 2020

Average annual service charge (incl VAT)	0.45%
Underlying manager performance fees expense	0.02%
Underlying global manager expense	0.08%
Underlying fund expense	0.17%
Other expenses	0.01%
Total Expense Ratio (TER)	0.73%
Transaction Costs (TC)	0.06%
Total Investment Charges (TER + TC)	0.78%

FAIS notice and disclaimer

Alexander Forbes Investments Limited is a licensed financial services provider in terms of Section 8 of the Financial Advisory and Intermediary Services Act, 37 of 2002, as amended, FAIS licence number 711. This information is not advice as defined and contemplated in the Financial Advisory and Intermediary Services Act, 37 of 2002, as amended. Past investment returns are not indicative of future returns. This product is not guaranteed. Please be advised that there may be representatives acting under supervision. Company Registration Number: 1997/000595/06. Pension Fund Administrator No.24/217. Long Term Insurance Act No. 00018/001. Postal address: P.O. Box 786055, Sandton 2146. Physical Address: 115 West Street, Sandown, 2196. Telephone number: +27 (11) 505 6000. The complaints policy and conflict of interest management policy can be found on the Alexander Forbes Investments website: <http://www.alexanderforbesinvestments.co.za>.

Notes

1. Market data is sourced from Datastream. The FTSE/JSE Africa Index Series is calculated by FTSE International Limited ("FTSE") in conjunction with the JSE Securities Exchange South Africa ("JSE") in accordance with standard criteria. The FTSE/JSE Africa Index Series is the proprietary information of FTSE and the JSE. All copyright subsisting in the FTSE/JSE Africa Index Series index values and constituent lists vests in FTSE and the JSE jointly. All their rights are reserved.
2. All returns are before deduction of Alexander Forbes Investments' policy fees and performance fees, but net of other expenses. Returns for periods exceeding one year are annualized and all returns are quoted in Rands. Past investment returns are not indicative of future returns.
3. All holdings information is based on latest available data.
4. There may be differences in totals due to rounding.
5. Kindly note that with effect from 1 April 2017, all Alexander Forbes Investments South African equity benchmarks have changed from the FTSE/JSE SWIX to the FTSE/JSE Capped SWIX ALSI Index.